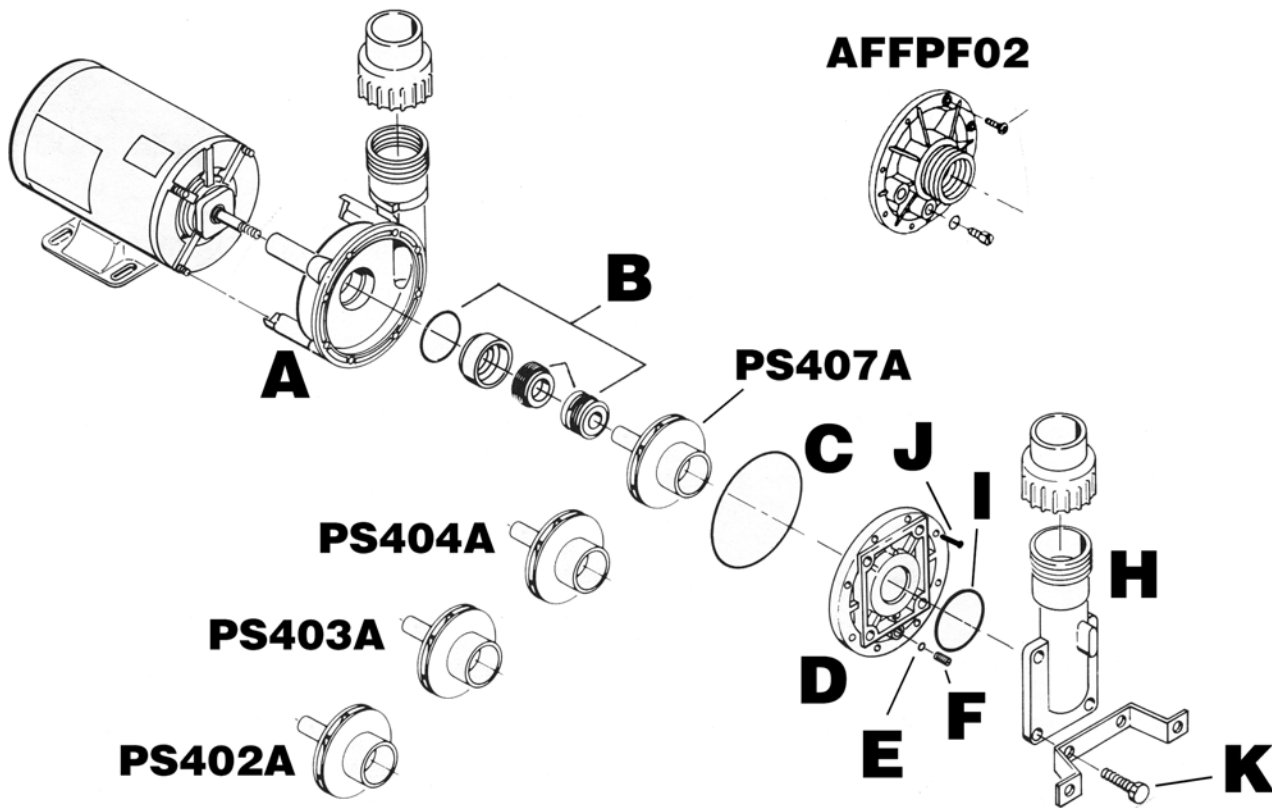


Table of Contents

Pump Parts MPS, ES, SS & DS	20
Pump Parts, ES-4: 2hp	21
Pump Parts 1997-1999 SS & DS	22
Pump Assembly for MPS & Poly Paks	22
Pump Parts, Poly Paks.	23
SSC, Thermowell, Cabinet and Cover Parts	23-24
EZ-1 Spa (Round) Electrical Parts	24
EZ-1 Spa (Round) Filter Parts (Waterway)	24-25
EZ-1 Spa (Round) Pump Parts	25
EZ-1 Spa (Round) Electrical Parts	25
EZ-1² Spa Jets	25-26
EZ-1² Spa Suction & Skimmer	26
EZ-1² Spa Pack Parts	26-27
EZ-1² Spa Plumbing Parts	27
Analog & Digital Parts for SS & DS Packs	28-30
Stereo & Fiber Optic Lighting.	31
Power System Chart	32
Software Revisions	33



Part Number

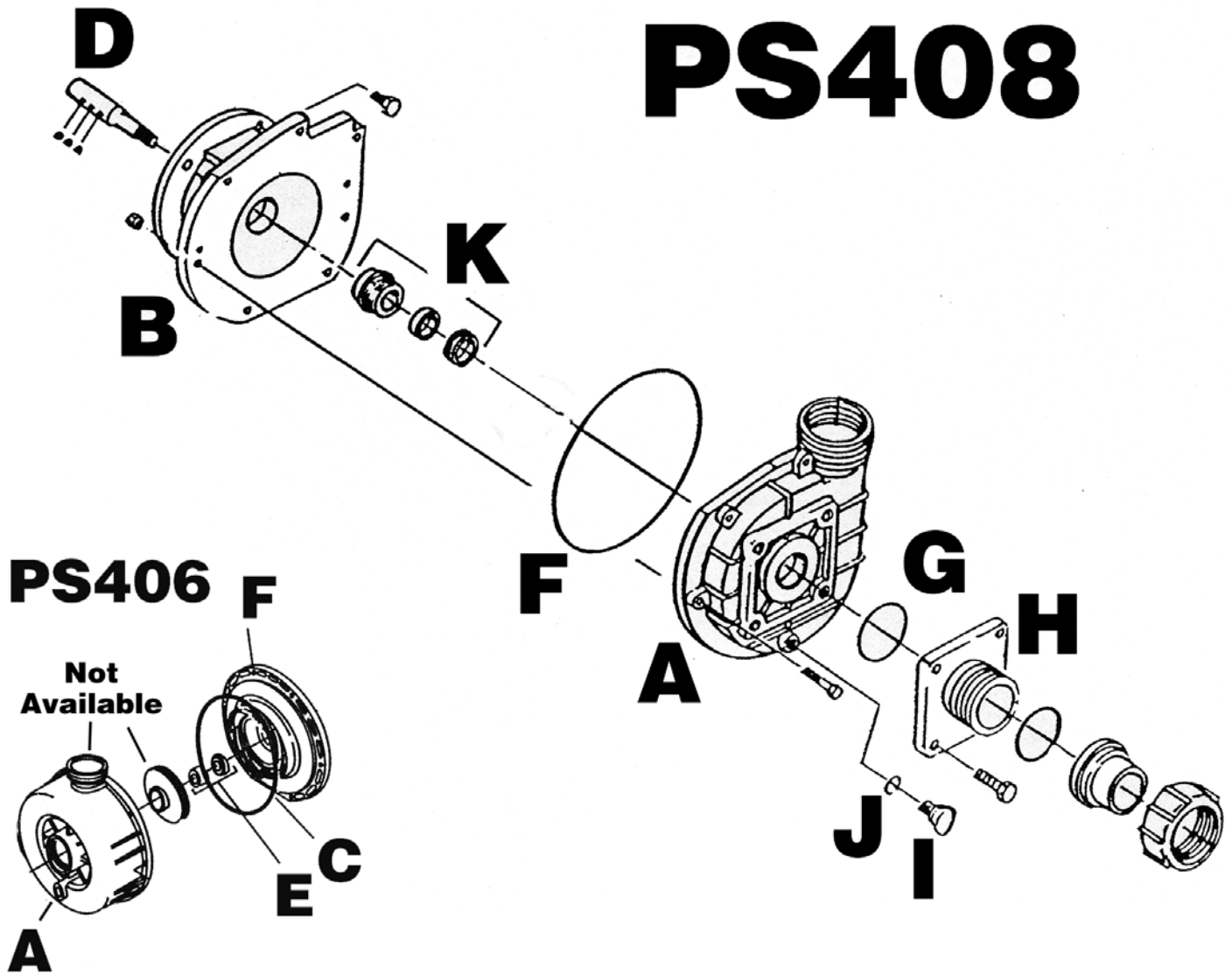
Description

System

PS400A	Volute, FMHP Series	MPS,ES,SS,DS(AF)
PS400B	Seal Assembly, Complete	MPS,ES,SS,DS(AF)
PS400C	O-Ring, Volute	MPS,ES,SS,DS(AF)
AFFPF02	Cover Side Discharge	MPS,ES,SS,DS(AF)
PS400D	Cover, Suction	MPS,ES,SS,DS(AF)
PS400E	O-Ring, Pipe Plug	MPS,ES,SS,DS(AF)
PS400F	Pipe Plug, 1/4" NPT	MPS,ES,SS,DS(AF)
PS400H	Flange, Suction 90 deg.	ES,SS,DS(AF)
PS400I	O-Ring, Suction Flange (Small)	ES,SS,DS(AquaFlo)
PS400J	Phillips Screws	ES,SS,DS(AquaFlo)
PS400K	Hex Bolts	ES,SS,DS(AquaFlo)
PS401A	Impeller, .75 HP	ES
PS402	Pump, 1 HP	ES-2
PS402A	Impeller, 1.0 HP	ES-2, SS-2
PS402WE	Pump wet end only complete 1 1/2" (FMVP)	ES-2, SS-2
PS403	Pump, 2 HP	ES-3
PS403A	Impeller, 2.0 HP	ES-3
PS404	Pump, .50 HP Circ.	ES-4
PS404A	Impeller, .50 HP	ES-4
PS402B	Pump, 1.5 HP 2SP	MPS,SS,DS
PS405B	Pump, 3HP 1 SP	DS-4
PS407	Pump, 3.6 HP 2 SP	SS-3,DS
PS407A	Impeller, 3.6 HP	SS-3,DS
PS407WE	Pump wet end only complete 1 1/2" (FMHP)	SS-3,DS
PS412	Cord, Pump P-2 (240V) w/Amp. Plug	SS,DS
PS412A	Cord, Pump P-2 (240V) w/Black Plug	ES
PS413	Cord, Pump P-1 (120V) w/Amp. Plug	SS,DS
PS413A	Cord, Pump P-1 (120V) w/Black Plug	ES
PS420A	Rubber Pump Bracket (anti-vib.) Set of 4	SS,DS

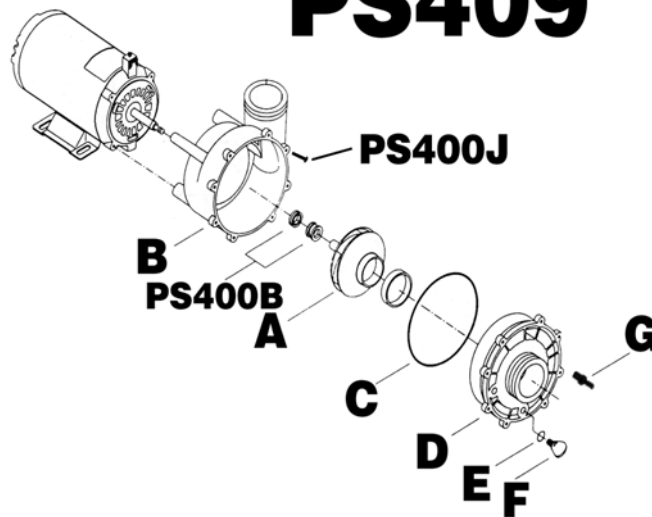
Pump Parts ES-4 (2hp)

PS408

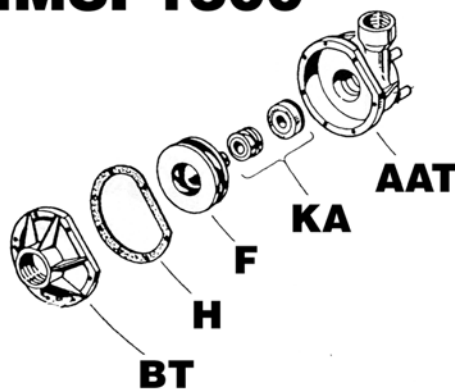


<u>Part Number</u>	<u>Description</u>	<u>System</u>
PS408A	Volute	ES-4
PS408B	Pump Bracket	ES-4
PS408D	Shaft Extension	ES-4
PS408F	Volute O-Ring	ES-4
PS408G	Suction Flange O-Ring	ES-4
PS408H	Suction Flange, 2"	ES-4
PS408I	1/4" NPT Pipe Plug	ES-4
PS408J	Pipe Plug O-Ring	ES-4
PS408K	Shaft Seal	ES-4
PS412A	Cord, Pump P-2 (240V) w/Black Plug	ES-4
PS406A	Plug 1/4" - 18 Drain Plug	ES-4, Baker Hyd, 2HP
PS406C	O-Ring Pump Housing	ES-4, Baker Hyd, 2HP
PS406E	Pump PS 200 Seal Assy.	ES-4, Baker Hyd, 2HP
PS406F	Pump Rear Housing	ES-4, Baker Hyd, 2HP
PS406H	V-Band Clamp	ES-4, Baker Hyd, 2HP

Pump Parts 1997-1999 SS & DS

PS409

<u>Part Number</u>	<u>Description</u>	<u>System</u>
PS400B	Shaft Seal Assembly	97 SS,DS
PS400J	Phillips Screw	97 SS,DS
PS409	Pump, 3.6HP, 2SP w/2" Wet End	97 SS,DS
PS409WE	Pump wet end only complete 2" (FMXP)	97 SS,DS
PS409A	Impeller, 3.6 HP/3.5 HP	97 SS,DS
PS409B	2" Side Discharge Volute	97 SS,DS
PS409C	Volute O-Ring	97 SS,DS
PS409D	Suction Cover 2"	97 SS,DS
PS409E	Drain Plug O-Ring	97 SS,DS
PS409F	Drain Plug	97 SS,DS
PS409G	Pump Prime Barb	97 SS,DS
PS410	Pump 3.5HP, 1SP w/2" Wet End	97 SS,DS
PS411	Pump 2 HP, 1SP (240V)	97 SS,DS
PS411A	Impeller 2HP	97 SS,DS
PS414	Pump 1/4hp 1sp., 120V 2" wet end	DS
PS414A	Impeller 1/4hp	DS
PS481	Pump 4.8hp, 1sp. 240V, 2" wet end	SS,DS
PS448	Pump 4.8HP,2SP 240V 2" Wet End	99 SS-1D,SS-3D
PS448A	Impeller 4.8HP	99 SS-1D,SS-3D

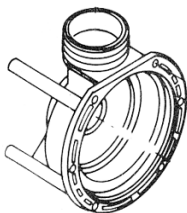
HMSP1500**Pump Assembly for MPS & Poly Paks**

<u>Part Number</u>	<u>Description</u>	<u>System</u>
HMSP1500AAT	Pump Housing (Gasket Style)	MPS, Poly Paks
HMSP1500BT	Pump Housing Cover (Gasket Style)	MPS, Poly Paks
HMSP1500F	Impeller	MPS, Poly Paks
HMSP1500H	Housing Gasket	MPS, Poly Paks
HMSP1500KA	Shaft Seal Assembly	MPS, Poly Paks

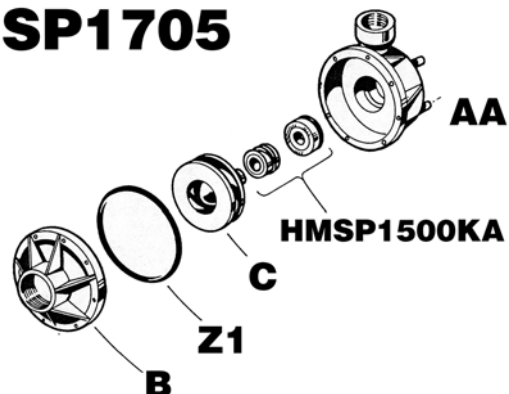
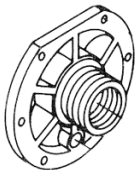
Pump Parts for Poly Paks

HMSP1705

AFCLP01



AFCLP02



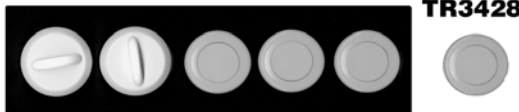
Part Number	Description	System
AFCLP01	Volute (Low Profile)	Poly - Aqua Flo
AFCLP02	Volute Cover (Low Profile)	Poly - Aqua Flo
HMSP1705AA	Pump Housing	Poly - Hayward
HMSP1705B	Housing Cover	Poly - Hayward
HMSP1705C	Pump Impeller	Poly - Hayward
HMSP1705Z1	Housing O-Ring Gasket	Poly - Hayward
PF354523	Bracket Diffuser	Poly - Pac Fab
PF354528	Body Housing	Poly - Pac Fab
PF354535	O-Ring Pump Bracket	Poly - Pac Fab
PF354545	Seal-Mechanical 5/8"	Poly - Pac Fab
PF354552	Impeller Assembly	Poly - Pac Fab
SRC10247P	Volute	Poly - Starite
SRC184P17P	Seal Plate	Poly - Starite
SRC5175P	Impeller	Poly - Starite

SSC, Thermowell, Cabinet and Cover Parts

SSC-3



SSC-5



PL674

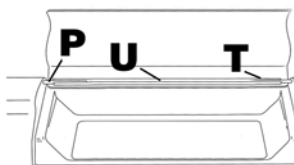


PS096

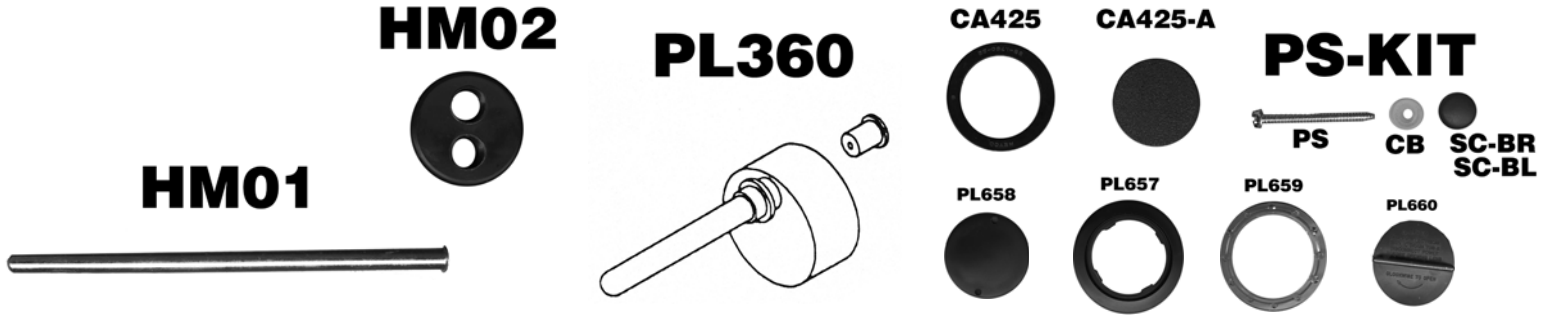


Part Number	Description	System
PS096	Spa Side Control, Tridelta	SSC Parts, ES
PS096A	Air Transmitter (SSC - Black)	SSC Parts, ES
SSC-3	3 Button Spa Control(no therm.)	SSC Parts, MPS
SSC-5	5 Button Spa Control(no therm.)	SSC Parts, MPS
TR3428	Air Button for 6 Shooter White	SSC Parts, MPS
PL674	Cabinet Logo Plate (Emerald)	All

SH060



Part Number	Description	System
SH060	SSC Cover Assembly, Smoke Acrylic	ES,SS,DS
SH060A	SSC & Filter Cover Repair Kit (grey pins, tape, screws, & U-Channel)	ES,SS,DS
SH060-P	Grey Pins for Cover	ES,SS,DS
SH060-T	1/4" Double Stick Tape (per foot)	ES,SS,DS
SH060-U	Black U-channel	ES,SS,DS



<u>Part Number</u>	<u>Description</u>	<u>System</u>
HM01	Thermowell (plated w/o-ring)	MPS
HM02	Sensor Port (Black - 2 Hole)	MPS
PL360	G/G Thermowell	ES,SS,DS
WP	Wood Panel	Emerald/Cygnus
SC-BR	Brown Snap Caps	All
SC-BL	Black Snap Caps	All
CA425	Cord Entry Bushing	All
CA425-A	Cord Access Cap (10)	All
J-BOLT	J-Bolt Complete	All
RS	Red Stain (quart)	All
GS	Grey Stain (quart)	All
CS	Cedar Stain (quart)	All
CF	Cover Fasteners Keylock (set of 4)	All
FCE	Acrylic Filter Cover (Emerald)	1997
WS	Panel Screw (NEW STYLE)	All
PL657	Cabinet Drain Body	SS,DS
PL658	Cabinet Drain Cap	SS,DS
PL659	Cabinet Drain Nut	SS,DS
PL660	Drain Tool	SS,DS



PL303	Cabinet Drain Assy. Complete (blk)	SS,DS
PL303A	Cabinet Drain Valve	SS,DS
PL303B	Cabinet Drain Valve Nut	SS,DS
PL303C	Cabinet Drain Niche (blk)	SS,DS
PL303D	Cabinet Drain Niche Nut	SS,DS
PL303E	Cabinet Drain Valve Cap (blk)	SS,DS
PL300	Water on/off Valve Complete	SS,DS
PL300A	Valve Body w/ Barbs	SS,DS
PL300B	Valve Body Nut	SS,DS
PL300C	Valve Knob	SS,DS

EZ-1 Spa (round) Electrical Parts

There is no need to represent diagrams. All the parts below are specific to the EZ-1 Round.

<u>Part Number</u>	<u>Description</u>	<u>System</u>
PS096A	Air Transmitter	Round
EZ110	GFCI Power Cord (15 AMP)	Round
EZ113	Pressure Switch	Round
EZ116	Relay	Round
EZ120	Time, Relay Circuit Board (Old Style)	Round
EZ121	Circuit Board (Balboa) - New Style	Round
EZ122	Control Panel (Balboa) - New Style	Round
EZ111A	Heater 1 1/2" (1KW)	Round
OM48331	Thermostat	Round
OM48324	Hi Limit	Round

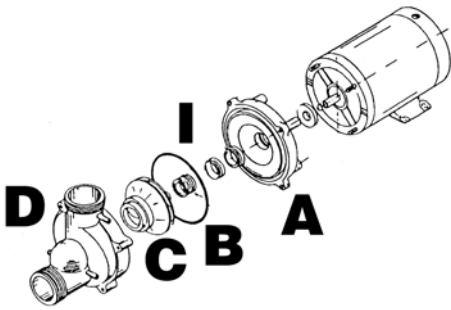
EZ-1 Spa (round) Waterway Filter Parts

For a diagram of this filter please turn to page 5 to view the diagram for the Waterway Filter

<u>Part Number</u>	<u>Description</u>	<u>System</u>
EZ402	25 sq. ft. Top Load Filter	Round
EZ402A	Filter Niche Top	Round
EZ402B	Lock Ring	Round
EZ402C	Air Relief Valve	Round
EZ402D	Air Relief Valve O-Ring	Round
EZ402E	Filter Lid w/Feeder	Round
EZ402F	O-Ring for Filter	Round
EZ402H	Filter Space Ring	Round
EZ402I	Filter Body	Round
EZ402K	Filter Niche Body w/Screws	Round
EZ402L	Bottom Locking Nut	Round
EZ402M	O-Ring for Feeder	Round
EZ402N	Snap Ring for Feeder	Round
PL520S	Filter Element	Round

EZ115

EZ-1 Spa (round) Pump Parts



<u>Part Number</u>	<u>Description</u>	<u>System</u>
EZ115	Pump, 1HP 2SP (Vico)	Round
EZ115A	Volute Back	Round
EZ115B	Pump O-Ring	Round
EZ115C	Impeller	Round
EZ115D	Volute Front (1 1/2")	Round
EZ115I	3/4" Seal Assembly	Round

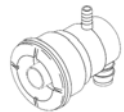
EZ-1 Spa (round) Jets

<u>Part Number</u>	<u>Description</u>	<u>System</u>
EZ408	Ultra Jet Straight Complete	Round
EZ408R	Ultra Jet Swirl Complete	Round
EZ408T	Vico Tool	Round
EZ409	Waterway Jet Complete	Round

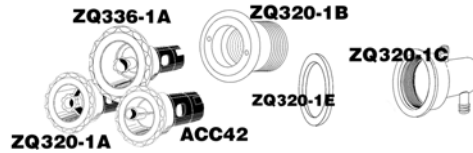
EZ408R



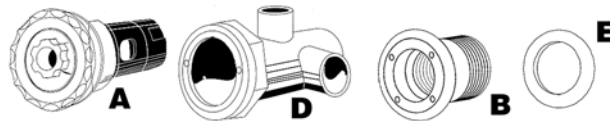
EZ409



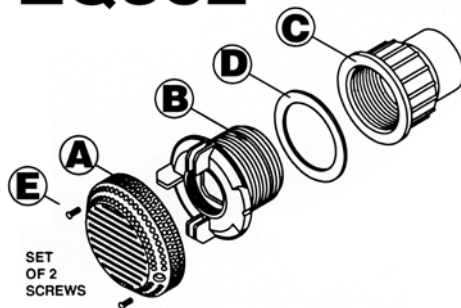
EZ-1² Spa Jets



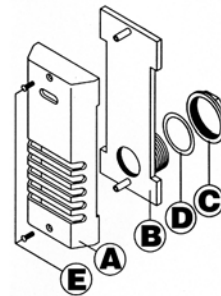
<u>Part Number</u>	<u>Description</u>	<u>System</u>
ZQ320-1	Luxury Jet w/Barb Fitting	EZ-1 ²
ZQ320-1A	Luxury Jet Barrel Only	EZ-1 ²
ZQ320-1B	Luxury Jet Wall Flange	EZ-1 ²
ZQ320-1C	Luxury Jet Body w/Barb Fitting	EZ-1 ²
ZQ320-1D	Luxury Jet Friction Gasket	EZ-1 ²
ZQ320-1E	Turbo Jet Rubber Gasket	EZ-1 ²
ZQ336-1LS	Turbo Swirl Jet w/Barb Fitting	EZ-1 ²
ZQ336-1A	LS Turbo Swirl Barrel Only	EZ-1 ²

ZQ340

<u>Part Number</u>	<u>Description</u>	<u>System</u>
ZQ340	Turbo Jet (Whirlpool Jet)	EZ-1 ²
ZQ340A	Turbo Jet Barrel Only	EZ-1 ²
ZQ340B	Turbo Jet Wall Flange	EZ-1 ²
ZQ340C	Turbo Jet Wall C-Clip	EZ-1 ²
ZQ340D	Turbo Jet Body	EZ-1 ²
ZQ340E	Turbo Jet Rubber Gasket	EZ-1 ²
ZQ340F	Turbo Jet Nut	EZ-1 ²

EZ-1² Spa Suction & Skimmer**ZQ362**

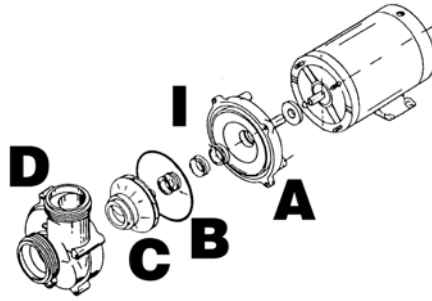
<u>Part Number</u>	<u>Description</u>	<u>System</u>
ZQ362	Suction Fitting, G&G	EZ-1 ²
ZQ362A	Suction Fitting Cover	EZ-1 ²
ZQ362B	Suction Fitting Wall Flange	EZ-1 ²
ZQ362C	Suction Fitting Nut	EZ-1 ²
ZQ362D	Suction Fitting Gasket	EZ-1 ²
ZQ362E	Suction Fitting Screw	EZ-1 ²
ZQ506	Strip Skimmer Complete	EZ-1 ²
ZQ506A	Strip Skimmer Face Plate	EZ-1 ²
ZQ506B	Strip Skimmer Wall Flange	EZ-1 ²
ZQ506C	Strip Skimmer Nut	EZ-1 ²
ZQ506D	Strip Skimmer Gasket	EZ-1 ²
ZQ506E	Strip Skimmer Screw	EZ-1 ²

ZQ506**EZ-1² Spa Pack Parts**

There is no need to represent the parts immediately below. All the parts below are specific to the EZ-1².

<u>Part Number</u>	<u>Description</u>	<u>System</u>
ZQ50644	EZ-2 Control Panel	EZ-1 ²
ZQ50645	EZ-2 Chassis (Circuit Board)	EZ-1 ²
ZQ30272	Sensor Assembly Complete	EZ-1 ²
ZQ30385	Temp Sensor Fitting	EZ-1 ²
ZQ111A	Heater 1 1/2" Aqua-Temp	EZ-1 ²
ZQ113	Pressure Switch	EZ-1 ²

ZQ115-1



<u>Part Number</u>	<u>Description</u>	<u>System</u>
ZQ115-1	EZ-2 Pump 1HP 2SP	EZ-1 ²
ZQ115-1A	Volute Back	EZ-1 ²
ZQ115-1B	Pump O-Ring	EZ-1 ²
ZQ115-1C	Impeller	EZ-1 ²
ZQ115-1D	Volute Front (2")	EZ-1 ²
ZQ115-1I	3/4 Seal Assembly	EZ-1 ²
ZQ110	GFCI Power Cord (15AMP)	EZ-1 ²

EZ-1² Spa Plumbing Parts

To see the diagram of the parts below turn to pages 14-17 to see the same part in our Plumbing Section.

<u>Part Number</u>	<u>Description</u>	<u>System</u>
ZQ522	EZ-2 Filter Complete	EZ-1 ²
ZQ522A	EZ-2 Filter Element	EZ-1 ²
ZQ385	Air Control	EZ-1 ²
ZQ603	4 Port 3/4" Manifold (Water)	EZ-1 ²
ZQ604	5 Port Air Manifold	EZ-1 ²
ZQ302	Hose Bib, Drain	EZ-1 ²
ZQ516	Hose Bib Cap	EZ-1 ²
ZQ606	2" x 2" 1/2" FPT Tee	EZ-1 ²
ZQ610	3/4" Spigot x 3/4" Insert	EZ-1 ²
ZQ611	1" Spigot x 3/4" Insert	EZ-1 ²
ZQ510ABC	AquaFlo Union 1 1/2" Female	EZ-1 ²
ZQ509	AquaFlo Union 2" Female	EZ-1 ²
ZQ612	Slip Plug 1"	EZ-1 ²
ZQ618	Slip Red Bushing, 1 1/2" x 1"	EZ-1 ²
ZQ620	45 Deg. Elbow 1 1/2"	EZ-1 ²
ZQ621	90 Deg. Street Elbow 1 1/2"	EZ-1 ²
ZQ624	Slip Cap 2"	EZ-1 ²
ZQ628	Coupling Slip 2"	EZ-1 ²
ZQ625	Slip Red. Bushing 2" x 3/4"	EZ-1 ²
ZQ627	Slip Red. Bushing 2" x 1 1/2"	EZ-1 ²
ZQ629	45 Deg. Elbow 2"	EZ-1 ²
ZQ630	90 Deg. Elbow 2"	EZ-1 ²
ZQ630A	90 Deg. Street Elbow 2"	EZ-1 ²
ZQ631	Slip Tee 2"	EZ-1 ²

Analog & Digital Parts for SS & DS Packs

PS10151



PS10152



PS10226



PS20033



PS20600



Part Number

PS10151
PS10152
PS10226
PS20033
PS20600

Description

Gasket Adhesive (small panel)
Gasket Adhesive (large panel)
Lamp, Digital Panel
Wire Harness (Battery)
Fuse, 3 AMP (Spa Light)

System

SS,DS
SS,DS
DS
DS
SS,DS

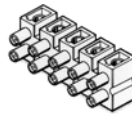
PS20618



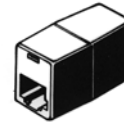
PS20630



PS21137



PS22165



PS22174

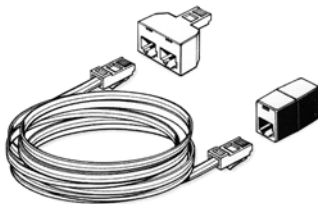


PS20618
PS20630
PS21137
PS21223
PS22165
PS22174

Jumper, Logic
Battery, 9V Ni Cad (7.2V)
Terminal Block (5 pos.)
Flow & Interlock Wire
Panel Coupler 1/1 for Serial Ext.Cord
Panel Adapter Plug 2/1 Serial

SS,DS
DS
SS,DS
SS,DS
DS,SSD
DS,SSD

PS22639



PS30123



PS30122



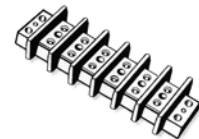
PS30136



PS30138



PS30253

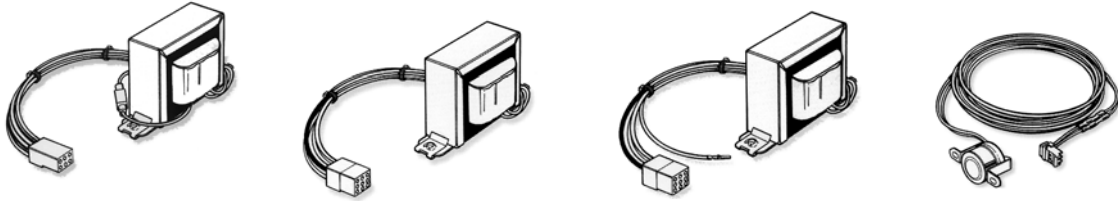


PS22225
PS22250
PS22251
PS22639
PS22640
PS22641
PS22634
PS30122
PS30123
PS30136
PS30138
PS30253

Extension 25' Digital Cord
Extension 50' Digital Cord
Extension 100' Digital Cord
Extension 25' Serial Cord
Extension 50' Serial Cord
Extension 50' 6 Con. Cord
Extension 100' Serial Cord
Fuse, 10 AMP (Blower)
Fuse, 20 AMP (Pump 2)
Fuse, 30 AMP (Power Input)
Fuse Block (30 AMP)
6 Position Terminal Block

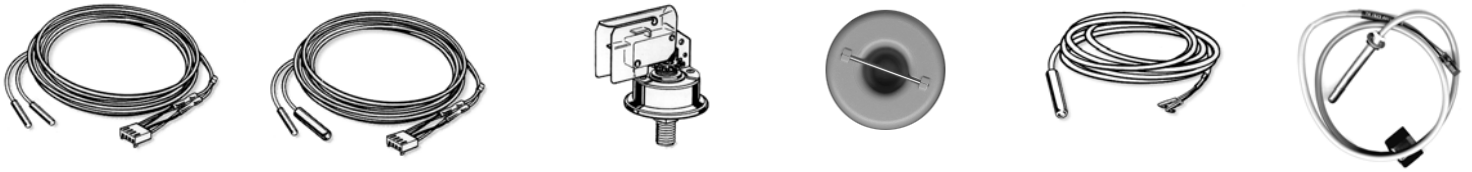
DS
DS
DS
DS,SSD
DS,SSD
DS,SSD
DS,SSD
SS,DS
DS
DS
DS
SS,DS

PS30270 PS30274-1 PS30274-2 PS22312



Part Number	Description	System
PS30270	Transformer (240V) DS3/4	DS
PS30274-1	Transformer Duplux (120V)	SS
PS30274-2	Transformer Duplux (240V)	SS
PS22312	Freeze Sensor (Optional)	DS

PS30278 PS30272 PS30408 PS30385-G PS30278A PS30382



PS30278	Sensor Assembly Complete (Small)	ES,SS,DS
PS30272	Sensor Assembly Complete (Large)	SS,DS
PS30408	Pressure Switch	SS,DS
PS30385-G	Sensor Mount Fitting - Grey	SS,DS
PS30278A	SS/DS 20' Sensor Assembly	SS,DS
PS30382	Sensor for DS-6	DS6

PS50663



PS51602



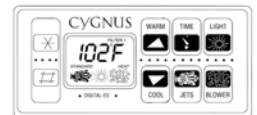
PS51219



PS51036



PS50676



PS50872



PS51033



PS50831



PS52771

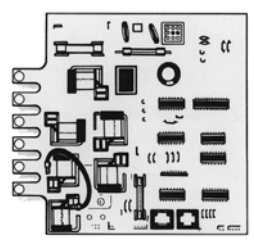


PS52772

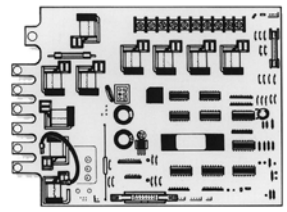


PS50663	Panel Complete (SS2/3)	SS
PS50659	Panel Complete (SS2/3) 25'	SS
PS50675	Panel (Emerald) Digital	DS
PS50676	Panel (Cygnus) Digital	DS
PS51219	Panel (Polynesian) SS-0	Poly
PS50664	Panel Complete (Ameridyne)	SS
PS50831	Panel (SS-3D)	SSD
PS50872	Panel DS-3/4 (Serial) Digital	DS
PS52771	Panel (DS-6)	DS
PS51033	Panel (DS-2) Digital	97 DS
PS51036	Panel (SS-0D) & (SS-1D)	97 SSD
PS51602	Panel (remote) DS-4	97 SSD
PPS10608	Overlay DS-4 SSC	DS-4
PS10595	Overlay DS-2 SSC	DS-2
PS10509	Overlay SS-3D SSC	SS-3D
PS10761	Overlay SS-0D/SS-1D SSC	SS-0D/SS-1D
PS10663	Overlay Cygnus Remote	DS-4
PS52772	Panel Jet 1	DS-6
PS52773	Panel Jet 2	DS-6
PS52774	Panel Jet 3	DS-6

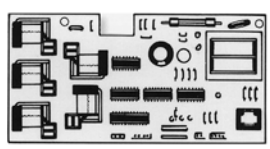
**PS50669A
PS50669C**



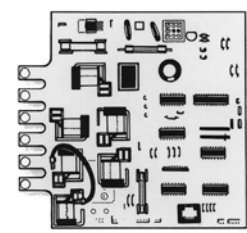
**PS50678
PS50679
PS50680**



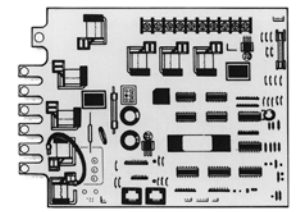
**PS51038
PS54115**



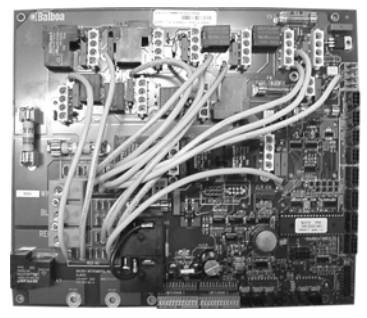
**PS50833
PS51040**



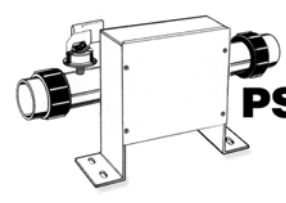
**PS51035
PS52014
PS50874**



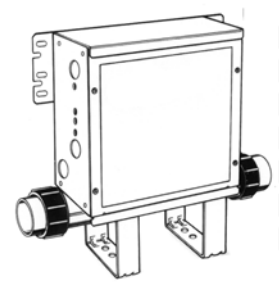
<u>Part Number</u>	<u>Description</u>	<u>System</u>
PS54115	Circuit Board (Lite Leader)	Lite LD
PS50669A	Circuit Board (SS2/3) - (2 + 5 HR. Filter)	SS
PS50669C	Circuit Board (SS2/3) - (6 + 12 HR. Filter)	SS
PS50678	Circuit Board (ES-71)	ES-3
PS50679	Circuit Board (ES-72)	ES-4
PS50680	Circuit Board (DS-3/4)	DS
PS50874	Circuit Board DS-4(Serial) w/Rmt.Jack	DS
PS52770	Circuit Board DS-6	DS
PS50833	Circuit Board (SS3D)	SSD
PS51035	Circuit Board (DS-2)	97 DS
PS51038	Circuit Board (SS-0D)	97 SSD
PS51040	Circuit Board (SS-1D)	97 SSD
PS52014	Millennium Circuit Board (DS2/4)	DS2,DS4
PS52014C	Millennium Fiber Optic Circuit Board (DS2/4)	DS2,DS4



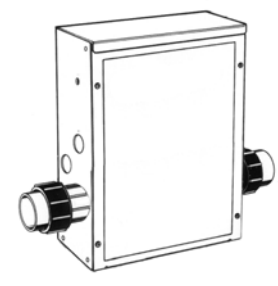
PS52770



PS54114



**PS50662
PS50661
PS50683
PS50834
PS50873
PS51034
PS51039**



PS52769

<u>Part Number</u>	<u>Description</u>	<u>System</u>
PS50662	SS-2 Chassis	SS
PS50661	SS-3 Chassis	SS
PS50683	DS-3/4 Chassis	DS
PS52769	DS-6 Chassis	DS
PS50648	SS-0 Chassis (PL-1)	Poly
PS54114	Lite LD Chassis w/4kw heater (PL-1)	PL-1
PS50834	SS-3D Chassis	SSD
PS50873	DS-4 Chassis (Serial)	DS
PS51034	DS-2 Chassis	97 DS
PS51037	SS-0D Chassis	97 SSD
PS51039	SS-1D Chassis	97 SSD
***** PS-SS0	Spa Pack - 120V 1 Pump	120V
***** PS-SS0D	Spa Pack - 120V 1 Pump	120V, 97 STYLE
***** PS-SS1D	Spa Pack - 240V 1 Pump, Blower	240V, 97 STYLE
***** PS-SS2	Spa Pack - 120/240V 1 Pump, Blower	120V
***** PS-SS3	Spa Pack - 240V 1 Pump, Blower	240V
***** PS-SS3D	Spa Pack - 240V 1 Pump, Blower	240V, 97 STYLE
***** PS-DS2	Spa Pack - 240V 2 Pump, Blower	240V, 97 STYLE
***** PS-DS3	Spa Pack - 240V 1 Pump, Blower	240V
***** PS-DS4R	Spa Pack-240V 2 Pump,Blowr(Ribbon)	240V
***** PS-DS4S	Spa Pack-240V 2 Pump,Blowr (Serial)	240V, 97 STYLE
***** PS223	GFCI Power Cord (20 AMP)	SS-2

*****All Packs include Pack,Pump(s),Spa Side Control,Heater,Blower(if

PS11011	Elite Stereo	DS2
PS11014	HydroVibe Stereo	DS4/6
PS52763	Stereo Command Center	DS 4/6
PS52775	Remote Panel Dolphin Remote	DS 4/6
PS52435	Receiver (DS-2 Stereo)	DS-4
PS52751	Receiver (DS-6 Stereo)	DS-6
PS11003	Stereo Receiver	Cygnus 2002
PS11005	Patio Speaker	Cygnus 2002
PS11006	Wired Stereo Remote	Cygnus 2002
PS11008	Power Supply	Cygnus 2002
PS11010	Transducers	Cygnus 2002
PS11012	DS2 Stereo Speaker	Cygnus 2002
PS11013	Speaker Sound Transfer	Cygnus 2002

PS11014



PS11011



PS52763



PS52775



PS52435



PS52751



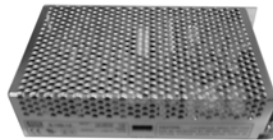
PS11013



PS11005



PS11008



PS11010



PS11012



FOSAMS	Fiber Optic Retrofit Light	DS
FOSAMS-A	Fiber Optic System Box only	DS
FOSAMS-B	Fiber Optic System Harness Only	DS
FOSAMS-C	Bulb	DS
FOSAMS-D	Fuse 1/2 amp	DS
FOSAMS-E	Lens and Nut (small)	DS

FOSAMS



FOSAMS-A



FOSAMS-B



FOSAMS-C



FOSAMS-D



FOSAMS-E

Emerald / Balboa Power System Chart

<u>Power System Model #</u>	<u>Emerald Part #</u>	<u>Approx. Year(s) Used</u>	<u>Software Number and # of Revisions</u>
ES-71 240V Emerald	PS50678	1991-1993	ES71R1 - A,B,C,D
ES-72 240V Cygnus	PS50679	1991-1993	ES72R1 - A,B,C,D
SS-2/SS-3 120/240V Emerald	PS50669C	1993-1997*	SSR1 - A,B,C,D
DS-3/DS4 240V Emerald IES/Cygnus	PS50680	1993-1997	DS34R1 - A,B
EZ-1 120V EZ-1-Round	EZ121	1992-1995	EZ1R1A
EZ-1² 120V EZ-1 Square	ZQ50645	1995-1998	EZ2R1A
SS-0 (PL-1) 120V Polynesian	PS50648	1995-1997	PL1R1A
SS-0D 120V Emerald Base	PS51038	1997-1999	SSODR1 - A,B,C
SS-1D 240V Emerald Base	PS51040	1997-Present	SS1DR1 - A,B,C
SS-3D 240V Emerald Classic	PS50833	1997-Present	SS23DR1 - A,B,C,D
DS-2 (Serial) 240V Emerald Elite	PS51035	1997-1999	DS2R1A
DS-4 (Serial) 240V Cygnus	PS50874	1997-1999	DS4R2 - A,B
DS-2** (Millennium) 240V Emerald Elite	PS52014	1999-Present	DS4R3 - A,B,C
DS-4** (Millennium) 240V Cygnus	PS52014	1999-Present	DS4R3 - A,B,C
DS-6 240V Cygnus	PS52770	2003-Present	EL8000R1A
Lite LD 120V/240V Emerald Base & Gemstone	PS54115	1999-Present	LiteLDR1A

* The SS-2 was still used until 1999 ** The DS-2 & DS-4 are the same board

Documented Revisional Changes in Software

Original Program <u>A</u>	Version <u>B</u>	Version <u>C</u>	Version <u>D</u>
ES-71	J-16 jumper change: filter cycle changes from 1.5 hrs to 3 hrs.	Panel Display now displays the icon O ³ (Ozone)	Added 24 hour filtration option, al- lowed ozone to run 24 hours and the light is dimmable.
ES-72	J-16 jumper change: filter cycle changes from 1.5 hrs to 3 hrs.	Panel Display now displays the icon O ³ (Ozone)	Added 24 hour filtration option, al- lowed ozone to run 24 hours and the light is dimmable.
SS-2/SS-3	In 20 amp mode the blower now runs with the jets	Change filter from 2 &-5 hours to 6 & 12 hour selections	D-VERSION: Light time-out from 4 hours to 1 hour. E-VERSION: low- pump runtime from 6 sec. to 1 min.
DS-3/DS4	Added 24 hour runtime feature		
EZ-1	Currently the EZ-1, EZ-1² and the SS-0 (PL-1) power systems maintain their original program. No revisions exist effective 4/03		
EZ-1²			
SS-0 (PL-1)			
SS-0D	Light time-out changed to 1 hour and Temp. range is now 60-104°F	Changed the low-pump runtime after the heater shuts off from 6 sec. to 1 minute.	
SS-1D	Light time-out changed to 1 hour and Temp. range is now 60-104°F	Changed the low-pump runtime after the heater shuts off from 6 sec. to 1 minute.	
SS-3D	Filter selection is now available by the top-side controller.	Light time-out changed to 1 hour and Temp. range is now 60-104°F.	Changed the low-pump runtime after the heater shuts off from 6 sec. to 1 minute.
DS-2 (Serial)	Currently the DS-2 (Serial) maintains its original program. No revisions exist effective 4/03		
DS-4 (Serial)	Added 2-speed blower feature. Removed dimmable light feature.		
DS-2 (Millennium)	Changed the low-pump runtime after the heater shuts off from 6 sec. to 1 minute.	Added Fiber Optic Light Option.	
DS-4 (Millennium)	Changed the low-pump runtime after the heater shuts off from 6 sec. to 1 minute.	Added Fiber Optic Light Option.	
DS-6 & LiteLD	Currently the DS-6 & LiteLD maintain their original program.		