

2005 PRODUCTION PARTS CATALOG

Table of Contents

Section 1: Fixtures	2
Section 2: Plumbing	8
Section 3: Plumbing Fittings	10
Section 4: Jets & Pillows	18
Section 5: Primary Equipment	22
Section 6: Secondary Equipment	26
Section 7: Pump Equipment	28
Section 8: Cabinetry	30

Table of Contents

SECTION 1: FIXTURES

Hawkeye Manufacturing 2005 Production Parts Catalog

Jet Bodies, Fittings, Gaskets & Filter Assemblies



Micro Jet Body

Part No: 20209
Manufacturer: GG Industries
Description: 3/8" Barb Micro Body



Micro Wall Fitting

Part No: 20214-CG
Manufacturer: GG Industries
Description: 1/2"x1-1/2" Smooth Face Wall Fitting



Micro Gasket

Part No: 20215
Manufacturer: GG Industries
Description: Micro Gasket



Macro Wall Fitting

Part No: 20222-CG
Manufacturer: GG Industries
Description: 2" 5 Scalloped Wall Fitting



Ozone Body Assembly

Part No: 211-0310
Manufacturer: Waterway
Description: 1/2" S Air/1" Spg x 3/8" SB



Ozone Body Assembly

Part No: 212-0090SM
Manufacturer: Waterway
Description: 3/8" RB Air x 3/4" RB Water-ell body



Ozone Body Assembly

Part No: 212-0540
Manufacturer: Waterway
Description: No Air x 3/4" S Water-ell body



Ozone Body Assembly

Part No: 212-0550
Manufacturer: Waterway
Description: 3/8" B Air x 3/4" SB Water-ell body



Cluster Storm Jet Body

Part No: 212-1560G
Manufacturer: Waterway
Description: 3/4" SB x 3/8" RB



Ozone/Cluster Jet

Part No: 212-9870
Manufacturer: Waterway
Description: Polished S/S Escutcheon

SECTION 1: FIXTURES

Hawkeye Manufacturing 2005 Production Parts Catalog

Jet Bodies, Fittings, Gaskets & Filter Assemblies

Fixtures



Large Face Cluster

Part No: 212-9887
Manufacturer: Waterway
Description: Polished S/S
Escutcheon-Thin



Poly Storm Self-Align Ring

Part No: 218-4010
Manufacturer: Waterway
Description: Poly Storm Body
Self-Alignment
Ring



Cluster Storm Self-Align Ring

Part No: 218-5150
Manufacturer: Waterway
Description: Cluster Storm
Body Self-
Alignment Ring



Power Storm Self-Align Ring

Part No: 218-6680
Manufacturer: Waterway
Description: Power Storm
Body Self-
Alignment Ring



Power Storm Jet Body

Part No: 223-6650
Manufacturer: Waterway
Description: 3/4"SB x
3/8"RB



Mini Storm Jet Body

Part No: 223-7920
Manufacturer: Waterway
Description: 3/4"SB x
3/8"RB



Poly Storm Jet Body

Part No: 223-8030
Manufacturer: Waterway
Description: 3/4"SB x
3/8"RB



7" Jet Body

Part No: 23470.0000
Manufacturer: CMP
Description: 3/4"RB x
3/8"RB



Ultra Blaster Jet Assembly

Part No: 26725-CG
Manufacturer: GG Industries
Description: 2"Spq x 3/8"
RB

SECTION 1: FIXTURES

Hawkeye Manufacturing 2005 Production Parts Catalog

Jet Bodies, Fittings, Gaskets & Filter Assemblies



100gpm Suction Fitting Gasket

Part No: 30115
Manufacturer: GG Industries
Description: Standard Suction Fitting Gasket



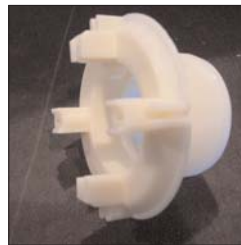
100gpm Suction Fitting Adapter

Part No: 30132
Manufacturer: GG Industries
Description: 1-1/2" Spg Threaded Adapter



100gpm Suction Fitting Cover

Part No: 30133-CG
Manufacturer: GG Industries
Description: Grey Suction Cover 3-3/4"OD w/screws



100gpm Suction Fitting Wall Fitting

Part No: 30147
Manufacturer: GG Industries
Description: 1-3/8" x 1-1/2" Slip 4 Post Fitting



100 GPM Suction Fitting Nut

Part No: 30161
Manufacturer: GG Industries
Description: Nut



Cyclone Super Jet Nut

Part No: 47940000
Manufacturer: Pentair
Description: Nut



Cyclone Super Jet Wall Thickness Comp.

Part No: 47950000
Manufacturer: Pentair
Description: Wall Thickness Compensator



Top Access 2" Diverter Valve

Part No: 600-3067
Manufacturer: Waterway
Description: Grey Notched 2" S inlet x 2" S Outlets (2)



Top Access 1" Diverter Valve

Part No: 600-4337
Manufacturer: Waterway
Description: Grey Notched 3 Port Diverter 1" S inlet -1" S Outlets (2)



On/Off Turn Valve

Part No: 600-4367
Manufacturer: Waterway
Description: Grey 1" Single Port Turn Valve

SECTION 1: FIXTURES

Hawkeye Manufacturing 2005 Production Parts Catalog

Jet Bodies, Fittings, Gaskets & Filter Assemblies

Fixtures



Low Profile Drain Assembly

Part No: 640-0407
Manufacturer: Waterway
Description: 3/4" Socket w/
1" Spg



Super Hi-Flo 200gpm Suction

Part No: 640-3857
Manufacturer: Waterway
Description: Grey 2" Straight
Threaded
Suction
Assembly



Air Control

Part No: 660-3587
Manufacturer: Waterway
Description: Grey 1" Top
Access Air
Control 5
Scallop



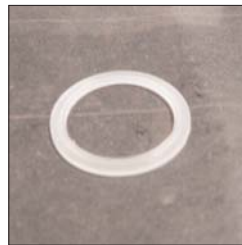
6" Aqua Fall Assembly

Part No: 675-4007
Manufacturer: Waterway
Description: Grey 3/4"
Socket Intake



8" Aqua Fall Assembly

Part No: 675-5007
Manufacturer: Waterway
Description: Grey 1" Slip w/
1-1/4" Spg
Intake



Standard Mini Jet Gasket

Part No: 711-0010
Manufacturer: Waterway
Description: Wall Fitting
Gasket



Poly Storm Jet Grommet Gasket

Part No: 711-4400
Manufacturer: Waterway
Description: Poly Storm Jet
Grommet
Gasket



Power Storm Jet Grommet Gasket

Part No: 711-6500
Manufacturer: Waterway
Description: Power Storm Jet
Grommet
Gasket



Mini Storm Jet Grommet Gasket

Part No: 711-6900
Manufacturer: Waterway
Description: Mini Storm Jet
Grommet
Gasket



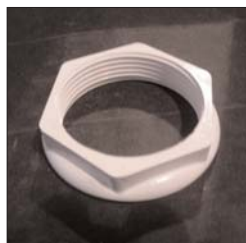
Ozone/Cluster Jet Gasket

Part No: 711-9870
Manufacturer: Waterway
Description: Ozone/Cluster
Jet Gasket

SECTION 1: FIXTURES

Hawkeye Manufacturing 2005 Production Parts Catalog

Jet Bodies, Fittings, Gaskets & Filter Assemblies



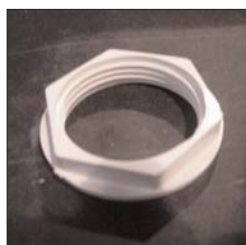
Poly Storm Jet Nut

Part No: 718-4100
Manufacturer: Waterway
Description: Poly Storm Jet Nut



Power Storm Jet Nut

Part No: 718-6600
Manufacturer: Waterway
Description: Power Storm Jet Nut



Mini Storm Jet Nut

Part No: 718-6900
Manufacturer: Waterway
Description: Mini Storm Jet Nut



Mini Storm Body Self-Alignment Ring

Part No: 718-6960
Manufacturer: Waterway
Description: Mini Storm Body Self-Alignment Ring



Cyclone Super Jet Body

Part No: 94002800
Manufacturer: Pentair
Description: 3/8" Rb x 3/4" Slip w/ 1" Spg



Cyclone Super Jet ell Gasket

Part No: 946600
Manufacturer: Pentair
Description: Cyclone Super Jet ell Gasket



Air Injector Nuts

Part No: A26015
Manufacturer: Prdt
Description: Components Air Injector Nuts



Air Injector Fitting

Part No: AIRINJECTORS
Manufacturer: Kota Intl
Description: Air Injector Fitting



7/8" Grey Seal Grommet

Part No: GSC050389
Manufacturer: General Seal Co
Description: 7/8" Grey Seal Grommet



Stainless Steel Hand Rail

Part No: Spa Hand Rail
Manufacturer: ASTI Inc.
Description: 7/8" OD x 29" Type 304 Stainless Steel Tube

SECTION 1: FIXTURES

Hawkeye Manufacturing 2005 Production Parts Catalog

Jet Bodies, Fittings, Gaskets & Filter Assemblies

Fixtures



Dyna-Flo II Top Mount Skim Filter

Part No: 510-3547
Manufacturer: Waterway
Description: 15-3/4" Grey Filter Assembly

Dyna-Flo II Top Mount Skim Filter

Part No: 510-3557
Manufacturer: Waterway
Description: 19-5/8" Grey Filter Assembly



Front Access Skim Filter

Part No: 510-9007
Manufacturer: Waterway
Description: 50 Sq Ft. Filter Assembly



SECTION 2: PLUMBING

Hawkeye Manufacturing 2005 Production Parts Catalog

Hose, Clamps, Pipe & Adhesive



PVC Cement

Part No: ABCLO-VOC/MED
Manufacturer: Tektube
Description: Clear PVC Cement Quart Can



PVC Primer

Part No: ABPRIMER
Manufacturer: Tektube
Description: Clear PVC Primer Quart Can



PVC Primer

Part No: ABPRIMERHIETCH
Manufacturer: Tektube
Description: Purple PVC Primer Quart Can



Clear Air Hose

Part No: CT0609300
Manufacturer: Tektube
Description: 3/8" x 400' Clear Tube



Clear Silicone

Part No: DC1C
Manufacturer: C.R. Laurence
Description: Clear Silicone 10.3oz



White Flex Hose

Part No: DS-013050
Manufacturer: Tektube
Description: 2" x 50' White Flex Hose



White Flex Hose

Part No: DS-020950
Manufacturer: Tektube
Description: 1" x 50' White Flex Hose



White Flex Hose

Part No: DS-0424100
Manufacturer: Tektube
Description: 1/2" x 100' White Flex Hose



White Flex Hose

Part No: DS-0904100
Manufacturer: Tektube
Description: 3/4" x 100' White Flex Hose



White Flex Hose

Part No: DS-112750
Manufacturer: Tektube
Description: 1-1/2" x 50' White Flex Hose

SECTION 2: PLUMBING

Hawkeye Manufacturing 2005 Production Parts Catalog

Hose, Clamps, Pipe & Adhesive



Hose Clamp

Part No: DW-17STZD
Manufacturer: Roto Clip
Description: 1-1/8" Double Wire Hose Clamps



Hose Clamp

Part No: DW-9STZD
Manufacturer: Roto Clip
Description: 3/8" Double Wire Hose Clamps



Grey Conduit Hose

Part No: GC-10050
Manufacturer: EECO
Description: 1" x 50' Grey Conduit Hose



PVC Pipe

Part No: PVC1" SCH40
Manufacturer: Hajoca
Description: 1" x 20' SCH40 PVC Pipe



PVC Pipe

Part No: PVC2" SCH40
Manufacturer: Hajoca
Description: 2" x 20' SCH40 PVC Pipe



PVC Pipe

Part No: PVC2" SCH80
Manufacturer: Hajoca
Description: 2" x 20' SCH80 PVC Pipe



ShurGrip Flex Hose

Part No: SG0904100-56S
Manufacturer: Tektube
Description: 3/4" x 100' Shur-Grip Flex Hose



Braided Flex Hose

Part No: TTG-B025
Manufacturer: Tektube
Description: 1/4" x 300' Braided Flex Hose



Braided Flex Hose

Part No: TTG-B075
Manufacturer: Tektube
Description: 3/4" x 150' Braided Flex Hose

SECTION 3: PLUMBING FITTINGS

Hawkeye Manufacturing 2005 Production Parts Catalog

Manifolds, Plugs, Unions, Valves, Tee's & Bushings



Pump Union

Part No: 0602-20
Manufacturer: Magic Plastics
Description: 2" x 2" Slip Pump Union



Pump Union

Part No: 0604-20
Manufacturer: Magic Plastics
Description: 2" 45 degree Slip Pump Union



Check Valve

Part No: 0805-05
Manufacturer: Magic Plastics
Description: 1/2" Air Check Valve



Gate Valve

Part No: 2202X
Manufacturer: Valterra Products
Description: 2" Unibody Gate Valve SpgX Slip



Injector Tee

Part No: 23835
Manufacturer: GG Industries
Description: Injector Tee
1/2" x 1/2" x 1/4"



Barb Connector

Part No: 23842-Red
Manufacturer: GG Industries
Description: 3/4" 90 degree Barb Connector



Pump Union

Part No: 400-1940
Manufacturer: Waterway
Description: 1" Pump Union w/ 3/4" Barb



Pump Union

Part No: 400-1950
Manufacturer: Waterway
Description: 1" Pump Union w/ 1/2" Socket



Valve Assembly

Part No: 400-2070
Manufacturer: Waterway
Description: 3/4" Hose On/Off Assembly



Tee

Part No: 401-005
Manufacturer: Spears
Description: 1/2" Tee (Soc x Soc x Soc)

SECTION 3: PLUMBING FITTINGS

Hawkeye Manufacturing 2005 Production Parts Catalog

Manifolds, Plugs, Unions, Valves, Tee's & Bushings



Tee

Part No: 401-007
Manufacturer: Spears
Description: 3/4" Tee (Soc x Soc x Soc)



Tee

Part No: 401-010
Manufacturer: Spears
Description: 1" Tee (Soc x Soc x Soc)



Tee

Part No: 401-015
Manufacturer: Spears
Description: 1-1/2" Tee (Soc x Soc x Soc)



Tee

Part No: 401-020
Manufacturer: Spears
Description: 2" Tee (Soc x Soc x Soc)



Tee

Part No: 401-101
Manufacturer: Spears
Description: 3/4" x 3/4" x 1/2" (Soc x Soc x Soc)



Tee

Part No: 401-247
Manufacturer: Spears
Description: 2" x 2" x 1/2" (Soc x Soc x Soc)



Tee

Part No: 401-248
Manufacturer: Spears
Description: 2" x 2" x 3/4" (Soc x Soc x Soc)



Tee

Part No: 402-210
Manufacturer: Spears
Description: 1-1/2" x 1-1/2" x 3/4" (Soc x Soc x Fipt)



Tee

Part No: 402-248
Manufacturer: Spears
Description: 2" x 2" x 3/4" (Soc x Soc x Fipt)



90 Degree ell

Part No: 406-015
Manufacturer: Spears
Description: 1-1/2" 90 Degree ell (Soc x Soc)

SECTION 3: PLUMBING FITTINGS

Hawkeye Manufacturing 2005 Production Parts Catalog

Manifolds, Plugs, Unions, Valves, Tee's & Bushings



90 Degree ell

Part No: 406-020
Manufacturer: Spears
Description: 2" 90 Degree ell (Soc x Soc)



90 Degree ell

Part No: 409-005
Manufacturer: Spears
Description: 1/2" 90 Degree ell (Spig x Soc)



90 Degree ell

Part No: 409-007
Manufacturer: Spears
Description: 3/4" 90 Degree ell (Spig x Soc)



90 Degree ell

Part No: 409-010
Manufacturer: Spears
Description: 1" 90 Degree ell (Spig x Soc)



90 Degree ell

Part No: 409-015
Manufacturer: Spears
Description: 1-1/2" 90 Degree ell (Spig x Soc)



90 Degree ell

Part No: 409-020
Manufacturer: Spears
Description: 2" 90 Degree ell (Spig x Soc)



45 Degree ell

Part No: 411-4040
Manufacturer: Waterway
Description: 1-1/2" 45 Degree ell (Spig x Soc)



90 Degree Sweep ell

Part No: 411-9120
Manufacturer: Waterway
Description: 2" 90 Degree sweep ell (Spig x Soc)



90 Degree Sweep ell

Part No: 411-9130
Manufacturer: Waterway
Description: 2" 90 Degree sweep ell (Soc x Soc)



Coupling Tee

Part No: 413-1800
Manufacturer: Waterway
Description: 3/4" x 3/4" x 3/4" Smooth Barb Tee

SECTION 3: PLUMBING FITTINGS

Hawkeye Manufacturing 2005 Production Parts Catalog

Manifolds, Plugs, Unions, Valves, Tee's & Bushings



Assist Tee

Part No: 413-4180
Manufacturer: Waterway
Description: 1" Top Access
Blower Assist
Tee



45 Degree ell

Part No: 417-020
Manufacturer: Spears
Description: 2" 45 Degree
ell (Soc x Soc)



Heater Tail Piece

Part No: 417-5050
Manufacturer: Waterway
Description: 2" x 2" Buttress
Threaded Tail
Piece



Adapter

Part No: 419-1920
Manufacturer: Waterway
Description: 3/4" x 1/2"
(Smooth Barb x
Spig)



Drain Niche

Part No: 41920-Black
Manufacturer: GG Industries
Description: Black Spa Drain
Niche with Nut



Spa Drain Cap

Part No: 41930-BK
Manufacturer: GG Industries
Description: Black 1/2" Slip
Body and Nut



Unionized Check Valve

Part No: 42150
Manufacturer: GG Industries
Description: 1-1/2"
Unionized Check
w/ 1/4" Spring



Adapter

Part No: 425-0210
Manufacturer: Waterway
Description: 1/2" Spig x
3/8" Ribbed
Barb



Adapter

Part No: 425-1000
Manufacturer: Waterway
Description: 1/2" Spig x
3/4" Ribbed
Barb



Reducer

Part No: 425-4020
Manufacturer: Waterway
Description: 3/8" x 1/4"
Ribbed Barb
Reducer

SECTION 3: PLUMBING FITTINGS

Hawkeye Manufacturing 2005 Production Parts Catalog

Manifolds, Plugs, Unions, Valves, Tee's & Bushings



45 Degree Sweep ell

Part No: 427-020
Manufacturer: Spears
Description: 2" 45 Degree sweep ell (Spig x Soc)



Coupler

Part No: 429-005
Manufacturer: Spears
Description: 1/2" Coupler (Soc x Soc)



Coupler

Part No: 429-007
Manufacturer: Spears
Description: 3/4" Coupler (Soc x Soc)



Coupler

Part No: 429-010
Manufacturer: Spears
Description: 1" Coupler (Soc x Soc)



Coupler

Part No: 429-015
Manufacturer: Spears
Description: 1-1/2" Coupler (Soc x Soc)



Coupler

Part No: 429-020
Manufacturer: Spears
Description: 2" Coupler (Soc x Soc)



Reducing Bushing

Part No: 437-101
Manufacturer: Spears
Description: 3/4" x 1/2" Reducing Bushing (spig x soc)



Reducing Bushing

Part No: 437-130
Manufacturer: Spears
Description: 1" x 1/2" Reducing Bushing (spig x soc)



Reducing Bushing

Part No: 437-131
Manufacturer: Spears
Description: 1" x 3/4" Reducing Bushing (spig x soc)



Reducing Bushing

Part No: 437-211
Manufacturer: Spears
Description: 1-1/2" x 1" Reducing Bushing (spig x soc)

SECTION 3: PLUMBING FITTINGS

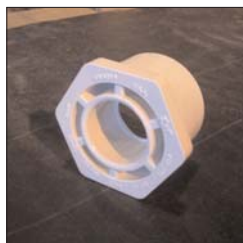
Hawkeye Manufacturing 2005 Production Parts Catalog

Manifolds, Plugs, Unions, Valves, Tee's & Bushings



Reducing Bushing

Part No: 437-247
Manufacturer: Spears
Description: 2" x 1/2"
Reducing
Bushing (spig x
soc)



Reducing Bushing

Part No: 437-249
Manufacturer: Spears
Description: 2" x 1"
Reducing
Bushing (spig x
soc)



Reducing Bushing

Part No: 437-251
Manufacturer: Spears
Description: 2" x 1-1/2"
Reducing
Bushing (spig x
soc)



Cap

Part No: 447-005
Manufacturer: Spears
Description: 1/2" Cap (Soc)



Cap

Part No: 447-010
Manufacturer: Spears
Description: 1" Cap (Soc)



Cap

Part No: 447-015
Manufacturer: Spears
Description: 1-1/2" Cap
(Soc)



Cap

Part No: 447-020
Manufacturer: Spears
Description: 2" Cap (Soc)



Plug

Part No: 449-005
Manufacturer: Spears
Description: 1/2" Plug (Spig)



Plug

Part No: 449-010
Manufacturer: Spears
Description: 1" Plug (Spig)



Plug

Part No: 449-015
Manufacturer: Spears
Description: 1-1/2" Plug
(Spig)

Plumbing
Fittings

SECTION 3: PLUMBING FITTINGS

Hawkeye Manufacturing 2005 Production Parts Catalog

Manifolds, Plugs, Unions, Valves, Tee's & Bushings



Check Valve

Part No: 550-6800
Manufacturer: Waterway
Description: 2" Water Check Valve (Soc x Soc)



Manifold

Part No: 672-4040
Manufacturer: Waterway
Description: Air Manifold 1" Slip x (4) 3/8" SB



Manifold

Part No: 672-4150
Manufacturer: Waterway
Description: Water Manifold 1-1/2" Slip x 1-1/2" Spig x (4) 3/4" SB



Manifold

Part No: 672-4160
Manufacturer: Waterway
Description: Water Manifold 2" Slip x 2" Spig x (4) 3/4" SB



Manifold

Part No: 672-4170
Manufacturer: Waterway
Description: Water Manifold 2" Slip x 2" Slip x (4) 3/4" SB



Barb Fitting

Part No: 672-4350
Manufacturer: Waterway
Description: 3/8" RB x 1/4" Mipt



Manifold

Part No: 672-4370
Manufacturer: Waterway
Description: Air Manifold 1" Slip x 1" Spig x 1" Spig x (8) 3/8" SB



Manifold

Part No: 672-4410
Manufacturer: Waterway
Description: Water Manifold 1" slip x (4) 3/4" SB



Manifold

Part No: 672-4960
Manufacturer: Waterway
Description: Water Manifold 1" Slip x Dead End x (4) 3/4" SB



Plug

Part No: 715-7190
Manufacturer: Waterway
Description: 3/4" SB Rubber Manifold Plug

SECTION 3: PLUMBING FITTINGS

Hawkeye Manufacturing 2005 Production Parts Catalog

Manifolds, Plugs, Unions, Valves, Tee's & Bushings



Plug

Part No: 715-9770
Manufacturer: Waterway
Description: 3/8" Barb
Manifold plug



Plug

Part No: 715-9860
Manufacturer: Waterway
Description: 3/4" RB Plastic
Manifold Plug



Plug

Part No: 715-9880
Manufacturer: Waterway
Description: 2" Spigot Plug



Tee

Part No: BV 0785
Manufacturer: SPA
Description: 3/4" SB x 3/4"
SB x 3/8" SB
Tee



Barb Fitting

Part No: PN 0785
Manufacturer: SPA
Description: 3/8" SB x 1/4"
Mipt



Ozone Injector

Part No: PZ 684
Manufacturer: Proozone
Description: V3 Injector
PZ684 3/4" SB
x 3/4" SB x
1/4" SB

SECTION 4: JETS & PILLOWS

Hawkeye Manufacturing 2005 Production Parts Catalog

Jets, Headrests & Moisture Barrier Base



Stainless Jet

Part No: 212-1507S
Manufacturer: Waterway
Description: Stainless Cluster Storm Jet Directional



Grey Jet

Part No: 212-1547
Manufacturer: Waterway
Description: Grey Scalloped Cluster Storm Jet Directional



Stainless Jet

Part No: 212-7607S
Manufacturer: Waterway
Description: Stainless Power Storm Jet Single Roto



Grey Jet

Part No: 212-7617
Manufacturer: Waterway
Description: Grey Scalloped Power Storm Jet Twin Roto



Stainless Jet

Part No: 212-7617S
Manufacturer: Waterway
Description: Stainless Power Storm Jet Twin Roto



Grey Jet

Part No: 212-7637
Manufacturer: Waterway
Description: Grey Scalloped Power Storm Jet Directional



Stainless Jet

Part No: 212-7637S
Manufacturer: Waterway
Description: Stainless Power Storm Jet Directional



Stainless Jet

Part No: 212-7947S
Manufacturer: Waterway
Description: Stainless Mini Storm Jet Twin Roto Large Face



Grey Jet

Part No: 212-7957
Manufacturer: Waterway
Description: Grey Scalloped Mini Storm Jet Twin Roto



Stainless Jet

Part No: 212-7957S
Manufacturer: Waterway
Description: Stainless Mini Storm Jet Twin Roto

SECTION 4: JETS & PILLOWS

Hawkeye Manufacturing 2005 Production Parts Catalog

Jets, Headrests & Moisture Barrier Base



Grey Jet

Part No: 212-8147
Manufacturer: Waterway
Description: Grey Scalloped Poly Storm Jet Single Roto



Stainless Jet

Part No: 212-8147S
Manufacturer: Waterway
Description: Stainless Poly Storm Jet Single Roto



Grey Jet

Part No: 212-8167
Manufacturer: Waterway
Description: Grey Scalloped Poly Storm Jet Directional



Stainless Jet

Part No: 212-8167S
Manufacturer: Waterway
Description: Stainless Poly Storm Jet Directional



Grey Jet

Part No: 212-8177
Manufacturer: Waterway
Description: Grey Scalloped Poly Storm Jet Twin Roto



Stainless Jet

Part No: 212-8177S
Manufacturer: Waterway
Description: Stainless Poly Storm Jet Twin Roto



Grey Jet

Part No: 23570.1410
Manufacturer: Custom Molded
Description: Grey Scalloped 7" Massage Jet



Pillow Plug

Part No: 25270-004
Manufacturer: Custom Molded
Description: Pillow Plugs



Stainless Jet

Part No: 940135WW
Manufacturer: Pentair
Description: Stainless Cyclone Super Jet



Grey Jet

Part No: 9895WW
Manufacturer: Pentair
Description: Grey Cyclone Super Jet

SECTION 4: JETS & PILLOWS

Hawkeye Manufacturing 2005 Production Parts Catalog

Jets, Headrests & Moisture Barrier Base



Pillow

Part No: S01026SIL
Manufacturer: Universal Urethane
Description: Silver Pillow, Flat Back, No Cups or Pins



Pillow

Part No: S01500SIL
Manufacturer: Universal Urethane
Description: Silver Pillow, Wrap Around, Corner, 3 pins



Pillow

Part No: S01894SIL
Manufacturer: Universal Urethane
Description: Silver Pillow, Large Curve, Lounge, 2 pins



Pillow

Part No: S01908SIL
Manufacturer: Universal Urethane
Description: Silver w/logo Pillow, Wrap Around, 3 pins



Pillow

Part No: S01909SIL
Manufacturer: Universal Urethane
Description: Silver w/logo Pillow, 2 pins



Pillow

Part No: S01931SIL
Manufacturer: Universal Urethane
Description: Silver w/logo Pillow, Lounger, 2 pins



Pillow

Part No: S01982SIL
Manufacturer: Universal Urethane
Description: Silver w/ logo Pillow, Thin Top, Neck, 2 pins



Pillow

Part No: S01995SIL
Manufacturer: Universal Urethane
Description: Silver Pillow, Neck Pillow

SECTION 4: JETS & PILLOWS

Hawkeye Manufacturing 2005 Production Parts Catalog

Jets, Headrests & Moisture Barrier Base



Moisture Barrier Base

Part No:	HDPEBLK
Manufacturer:	Curbell
Description:	HDPE Plastic Moisture Barrier Material 89x89

SECTION 5: PRIMARY EQUIPMENT

Hawkeye Manufacturing 2005 Production Parts Catalog

Control Packs, Overlays, Topside Controls & Switches



Overlay

Part No: 11167-01A
Manufacturer: Generic
Description: Hawkeye TSC-16
10 key, 3 pump



Overlay

Part No: 11169-01A
Manufacturer: Generic
Description: Hawkeye TSC-16
8 key, 2 pump



Overlay

Part No: 11170-01A
Manufacturer: Generic
Description: Hawkeye TSC-16
8 key, 3 pump



Overlay

Part No: 11171-01A
Manufacturer: Generic
Description: Hawkeye TSC-16
8 key, 2 pump



Overlay

Part No: 11172-01A
Manufacturer: Generic
Description: Hawkeye TSC-16
8 key, 1 pump



Overlay

Part No: 11180-01A
Manufacturer: Generic
Description: Barefoot TSC-16
10 key, 2 pump



Overlay

Part No: 11181-01A
Manufacturer: Generic
Description: Barefoot TSC-16
10 key, 3 pump



Overlay

Part No: 11182-01A
Manufacturer: Generic
Description: Barefoot TSC-16
10 key, 1 pump



Overlay

Part No: 11185-01A
Manufacturer: Generic
Description: Hawkeye/Barefoot TSC-29 Blue Dot



Topside Control

Part No: 3-00-7005
Manufacturer: SBSG
Description: TSC-18
(Domestic Use Only)

SECTION 5: PRIMARY EQUIPMENT

Hawkeye Manufacturing 2005 Production Parts Catalog

Control Packs, Overlays, Topside Controls & Switches



Topside Control

Part No: 3-00-7011
Manufacturer: SBSG
Description: TSC-19
(Domestic Use Only)



Topside Control

Part No: 3-00-7024
Manufacturer: SBSG
Description: TSC-29, 8-Pin
Connector
(Domestic Use Only)



Topside Control

Part No: 3-00-7025
Manufacturer: SBSG
Description: TSC-29, 4-Pin
Connector
(Domestic Use Only)



Topside Control

Part No: 3-00-7052
Manufacturer: SBSG
Description: TSC-8 (Domestic
Use Only)



Topside Control

Part No: 3-00-7123
Manufacturer: SBSG
Description: TSC-16, 10 key
(Domestic Use Only)



Topside Control

Part No: 3-00-7126
Manufacturer: SBSG
Description: TSC-16, 8 key
(Domestic Use Only)



Topside Control

Part No: 3-00-7128
Manufacturer: SBSG
Description: TSC-4, 10 key
(Foreign Use Only)



Topside Control

Part No: 3-00-7170
Manufacturer: SBSG
Description: TSC-19, 4 key
(Foreign Use Only)



Topside Control

Part No: 3-00-7208
Manufacturer: SBSG
Description: TSC-16, 10 key
(Foreign Use Only)



Topside Control

Part No: 3-00-7211
Manufacturer: SBSG
Description: TSC-29, 8-Pin
Connector
(Foreign Use Only)

Primary
Equipment

SECTION 5: PRIMARY EQUIPMENT

Hawkeye Manufacturing 2005 Production Parts Catalog

Control Packs, Overlays, Topside Controls & Switches



Overlay

Part No: 3-05-7092
Manufacturer: SBSG
Description: Generic TSC-19,
4 key, 1 pump



Overlay

Part No: 3-05-7104
Manufacturer: SBSG
Description: Generic TSC-19,
4 key, 2 pump



Control

Part No: 3-50-7022
Manufacturer: SBSG
Description: Infrared Sensor
(Domestic Use
Only)



Control

Part No: 3-50-7038
Manufacturer: SBSG
Description: Infrared Sensor
(Foreign Use
Only)



Control Pack

Part No: 3-72-7019
Manufacturer: SBSG
Description: S-Spa Pack, 1
pump w/ Flo-thru
Heater (Domestic
Use Only)



Control Pack

Part No: 3-72-7028
Manufacturer: SBSG
Description: S-Spa Pack, 2/3
pump w/ Flo-thru
Heater (Domestic
Use Only)



Control Pack

Part No: 3-72-7060
Manufacturer: SBSG
Description: S-Spa Pack, 2
pump w/Flo-thru
Heater (Foreign
Use Only)



Control Pack

Part No: 3-74-7017
Manufacturer: SBSG
Description: M-Spa Pack, 3
pump, No Heater
(Domestic Use
Only)



Control Pack

Part No: 3-74-7029
Manufacturer: SBSG
Description: M-Spa Pack, 3
pump w/ Flo-thru
Heater (Domestic
Use Only)



Control Pack

Part No: 3-74-7032
Manufacturer: SBSG
Description: M-Spa Pack, 3
pump, No
Heater (Foreign
Use Only)

SECTION 5: PRIMARY EQUIPMENT

Hawkeye Manufacturing 2005 Production Parts Catalog

Control Packs, Overlays, Topside Controls & Switches



Control Pack

Part No: 3-74-7048
Manufacturer: SBSG
Description: M-Spa Pack, 3 Pump w/Flo-thru Heater (Foreign Use Only)



Control

Part No: 3903
Manufacturer: Tec Mark
Description: Pressure Control Switch



Control

Part No: 4-30-7000
Manufacturer: SBSG
Description: Temperature Probe Holder Grey Trim Ring



Control

Part No: 4-30-7001
Manufacturer: SBSG
Description: Temperature Probe Holder



Overlay

Part No: 9916-100293P
Manufacturer: Generic
Description: Hawkeye TSC-8 8 key, 3 pump



Overlay

Part No: 9916-100294
Manufacturer: Generic
Description: Hawkeye TSC-8 8 key, 2 pump



Overlay

Part No: 9916-100296
Manufacturer: Generic
Description: Hawkeye TSC-8 8 key, 1 pump



Overlay

Part No: 9916-100301
Manufacturer: Generic
Description: Hawkeye TSC-18 4 key, 1 pump

SECTION 6: SECONDARY EQUIPMENT

Hawkeye Manufacturing 2005 Production Parts Catalog

Heater, Ozone Generator & Lighting



Conduit Nipple

Part No: 1104-DC
Manufacturer: Generic
Description: 1" Conduit Nipple



Heater Insulation

Part No: 118INS
Manufacturer: Generic
Description: 1-1/8"x1/2"x6' Laing Heater Insulation



Small Spa Light

Part No: 25240.0000
Manufacturer: Custom Molded
Description: Small Spa Light Housing Assembly Rear Access



Heater

Part No: 6746
Manufacturer: Laing
Description: 4.1 kw Laing Heater with J&J Cord



Heater

Part No: 6813
Manufacturer: Laing
Description: 2.9 kw Laing Heater with J&J Cord (Europe Only)



Ozone Parts Bag

Part No: 9-0482i
Manufacturer: Del Industries
Description: Ozone Parts Bag



Large Spa Light

Part No: BLWALLLARGE
Manufacturer: BELIGHT
Description: Large Spa Light Housing Assembly Rear Access



Ozone Generator

Part No: CDS-16PROZM25P
Manufacturer: Del Industries
Description: Domestic CD Chip Ozone Generator w/J&J Cord



Ozone Generator

Part No: ECS-1TAH-240/50
Manufacturer: Del Industries
Description: European CD Chip Ozone Generator w/J&J Cord



LED Light Assembly

Part No: LED LIGHT
Manufacturer: Brilliant Elec.
Description: 27 LED Light Fixture

SECTION 6: SECONDARY EQUIPMENT

Hawkeye Manufacturing 2005 Production Parts Catalog

Jets, Ozone, Fittings, Gaskets & Filtration



Light Bulb

Part No: P1120
Manufacturer: Generic
Description: 906 Light Bulb



Electrical PVC Coupler

Part No: PV1CP
Manufacturer: Generic
Description: Grey 1" PVC
Electrical
Coupler



Electrical PVC Adapter

Part No: PV1FTA
Manufacturer: Generic
Description: Grey 1" PVC
Electrical
Female Adapter



Heater Strap

Part No: PV3/4STRAP
Manufacturer: Generic
Description: Grey 3/4" 2
hole Laing
Heater Strap



Hose Clamp

Part No: TC-6712
Manufacturer: TC Christy
Description: #12 Stainless
Worm Gear
Hose Clamp



Grounding Wire

Part No: WISOLBARECU500
Manufacturer: Generic
Description: #8 Solid Bare
Copper Wire

SECTION 7: PUMP EQUIPMENT

Hawkeye Manufacturing 2005 Production Parts Catalog

Jet Pumps, Circulation Pumps & Pads



Circulation Pump

Part No: 02475368-2010
Manufacturer: Aqua-Flo
Description: 115V 1/15 HP
60hz 1-1/2"
Connections



2 Speed Pump

Part No: 10-25-003
Manufacturer: Pentair
Description: 220V 2HP 2Spd
50hz 2" Connect
(European Use
Only)



1 Speed Pump

Part No: 10-25-004
Manufacturer: Pentair
Description: 220V 2HP 1Spd
50hz 2" Connect
(European Use
Only)



Circulation Pump

Part No: 65979JJ
Manufacturer: Laing
Description: 115V 60hz
3/4"
Connections



Pump Pad

Part No: 99120
Manufacturer: GG Industries
Description: Rubber Anti-
Vibration Pump
Pad



1 Speed Pump

Part No: DJAHB-0121H
Manufacturer: Pentair
Description: 230V 6.1HP
1Spd 60hz 2"
Connections



2 Speed Pump

Part No: DJAYFA-3122H
Manufacturer: Pentair
Description: 115V 2.0HP
2Spd 60hz 2"
Connections



2 Speed Pump

Part No: DJAYGB-3121H
Manufacturer: Pentair
Description: 230V 4.2HP
2Spd 60hz 2"
Connections



2 Speed Pump

Part No: DJAYHB-3121H
Manufacturer: Pentair
Description: 230V 6.1HP
2spd 60hz 2"
Connections



Pump Pad

Part No: MPPAD
Manufacturer: Pentair
Description: Rubber Anti-
Vibration Pump
Mounts

SECTION 7: PUMP EQUIPMENT

Hawkeye Manufacturing 2005 Production Parts Catalog

Jet Pumps, Circulation Pumps & Pads



1 Speed Pump

Part No: PUULSC302582PR
Manufacturer: Pentair
Description: 230V 3.0HP
1Spd 60hz 2"
Connections



Circulation Pump

Part No: SM-959-NHW-26
Manufacturer: Laing
Description: 230V 50hz 3/4"
Connect
(European Use
Only)

Pump
Equipment

SECTION 8: CABINETRY

Hawkeye Manufacturing 2005 Production Parts Catalog

Mahogany & Synthetic Cabinetry Materials

Cabinetry



Corner Molding

Part No: Corner Molding
Manufacturer: KTP
Description: Mahogany
Corner Molding
1-3/8" x 1-3/8"
x 34"



T-Rail

Part No: DIE 5260-Gray
Manufacturer: CPI
Description: Gray Synthetic T-
Rail 32" Length



T-Rail

Part No: DIE 5260-Red
Manufacturer: CPI
Description: Red Synthetic T-
Rail 32" Length



T&G Cladding

Part No: DIE# 1038
Manufacturer: CPI
Description: Gray Synthetic
Wide Cladding
1/2" x 2-7/8" x
33"



T&G Cladding

Part No: DIE# 1112
Manufacturer: CPI
Description: Gray Synthetic
Narrow Cladding
1/2" x 1-1/2" x
33"



T&G Cladding

Part No: DIE#1038RE0002
Manufacturer: CPI
Description: Red Synthetic
Wide Cladding
1/2" x 2-7/8" x
33"



T&G Cladding

Part No: DIE#1112RE0002
Manufacturer: CPI
Description: Red Synthetic
Narrow Cladding
1/2" x 1-1/2" x
33"



Round Corner

Part No: Round Corner
Manufacturer: KTP
Description: Mahogany
Round Corner
14" diameter 7"
radius



T&G Cladding

Part No: T&G Panel 27.5"
Manufacturer: KTP
Description: Mahogany 1/2"
x 2-7/8" x 27-
1/2" Cladding



T&G Cladding

Part No: T&G Panel 33"
Manufacturer: KTP
Description: Mahogany 1/2"
x 2-7/8" x 33"
Cladding

SECTION 8: CABINETRY

Hawkeye Manufacturing 2005 Production Parts Catalog

Mahogany & Synthetic Cabinetry Materials



T&G Cladding

Part No: T&G Small 27"
Manufacturer: KTP
Description: Mahogany 1/2"
x 1-1/2" x 27"
Cladding



T&G Cladding

Part No: T&G Small 33"
Manufacturer: KTP
Description: Mahogany 1/2"
x 1-1/2" x 33"
Cladding



T-Rail

Part No: T-Rail 32"
Manufacturer: KTP
Description: Mahogany T-Rail
13/16" x 2-
1/4" x 32"



Top Rail

Part No: Top Rail 70"
Manufacturer: KTP
Description: Mahogany Top
Rail 1-3/8" x 3-
1/2" x 70"



Top Rail

Part No: Top Rail 87"
Manufacturer: KTP
Description: Mahogany Top
Rail 1-3/8" x 3-
1/2" x 87"